

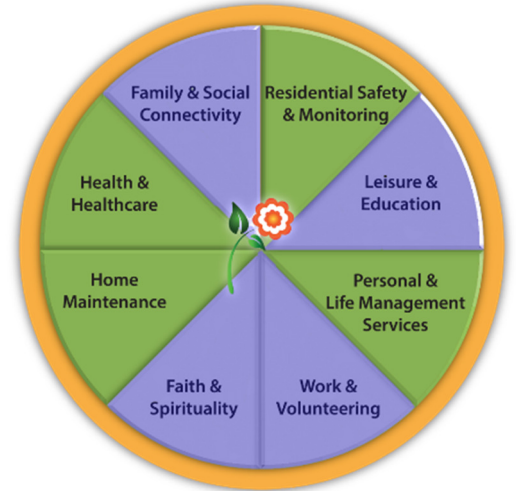


Community Partnership Program Overview

The Communo₂ Community Partnership Program, made possible by the unique Communo₂ “**SuperApp**”, enables individuals and families to always remain supportively connected with the people, organizations and services that are important to them.

Introducing Communo₂ – Oxygen for the Community

The Communo₂ **SuperApp** provides consumer engagement, empowerment, and independence for everyone. It is a community-wide “utility” that is freely available to consumers, bringing the benefits of modern information and communications technologies to all, regardless of age, health, ability, socio-economic position, education, location, language, or ethnicity. Communo₂ takes a 360 degree view of people’s needs, providing innovative tools, services, and connectivity in all eight areas of life. It is safe, secure, free or affordable, engaging, ad-free, and extremely easy to use.

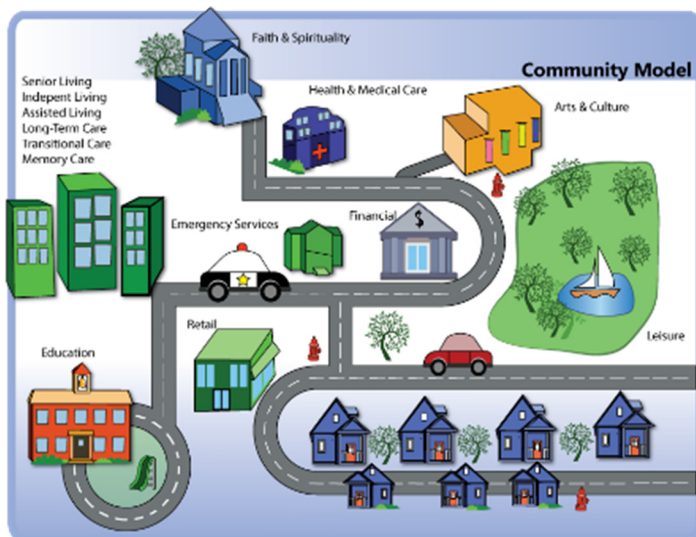


What is the Communo₂ Community Partnership Program?

The Program enables every consumer-facing organization in the community to connect with its customers, members, patients, congregants, etc. in new and unique ways. The Communo₂ integrated technology platform allows the organizations to provide innovative and supportive, value-enhancing services.

The Communo₂ implementation team collaborates with local governments and other community organizations to bring the resources and benefits of the community directly to its residents – while they are at home or away.

With an innovative set of mobile and web-based technology applications, Communo₂ makes it easy to extend services to anyone, anywhere, creating a powerful network for engaging all the resources of the community. A Communo₂ Community is comprised of:



- A single county, municipality or region
- Healthcare organizations including hospitals, clinics, pharmacies, home health, etc.
- Social services organizations
- Retail and merchant organizations
- Local professionals and service providers
- Public libraries, government offices, community and senior centers
- Churches, synagogues, mosques, etc.
- Independent senior housing, assisted living, group homes and other long term care communities
- Day care and program centers (child and adult)
- VFW and fraternal organizations
- Users: individual residents and families in or otherwise connected to the defined community

Using CommunO₂, communities create new and innovative services to benefit their residents and organizations by:

- Connecting family members and friends anywhere in the world for services, weddings, funerals, concerts, school alumni and anniversary events, etc. when physically attending the event isn't possible or practical
- Enabling viewers to experience and engage in live streamed events such as a community event or organization gathering, one-on-one appointments, community education classes, weekly services of a church, synagogue, mosque or municipal gatherings
- Providing community residents more personalized assistance with face-to-face on-screen video connections with city office staff, merchants, and other services
- Increasing resident engagement and making services more accessible and relevant to community members, as well as being able to reach a broader audience beyond a core community
- Enabling face-to-face televisits with doctors, nurses, and health coaches, as well as clergy, educators, and customer support services
- Providing family care providers and community service organizations with remote caregiving tools, including safety-sensor capabilities
- Implementing "e-Volunteering" programs, giving community youths as well as adults at home or at work new and flexible opportunities to reach out to others in the community, to help or to benefit themselves

Why Connect to the CommunO₂ Community?

The ability for individuals of all ages to engage with community organizations important to them is a critical component of physical, mental and spiritual well-being. When issues arise that make it difficult or impossible to physically access resources, where there are insufficient numbers of caregivers and clinicians available to serve the needs of the community, or when access to health care and senior care is cost prohibitive, enhanced community connections are critical; CommunO₂ is the solution.

Learn More

CommunO₂ Community is being introduced in a limited number of communities. Early participating communities receive preferential pricing and service, and have significant influence on future CommunO₂ features and functions.

If you would like additional information and to be considered for participation in the CommunO₂ Community Partnership Program, please contact us. We'll be happy to introduce you to the CommunO₂ **SuperApp** and the CommunO₂ Community Partnership Program.

For additional information, contact:

Joel Ackerman, Founder
CommunO₂, LLC
Joel.Ackerman@communo2.com
612-562-8322

Dona Wishart
Michigan Community Connect Program Manager
DonaWishart@OCCOOnline.org
989-748-4060